



NEPTUNE

CONTEMPORARY AND TRADITIONAL STREET FURNITURE

Adriatic Range Brochure

Head Office: Neptune Street Furniture, Time House, 19 Hillsons Road, Botley, Hampshire, SO30 2DY

Phone: 01962 777799 - **Fax:** 01962 777723

Email: enquiries@nofl.co.uk - **Website:** www.nofl.co.uk



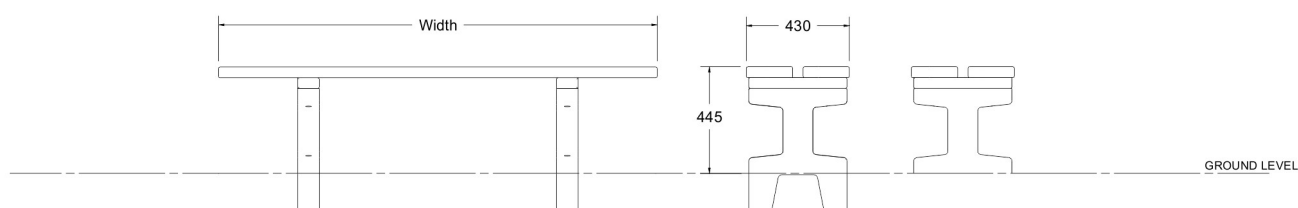
NEPTUNE

CONTEMPORARY AND TRADITIONAL STREET FURNITURE



Adriatic Bench

Our Adriatic range of products is based around white face concrete structures mixed with 45 x 195mm hardwood, both of which offer a clean, durable heavy duty finish. Where required concrete products can be finished in a range of colours or with textured aggregate surfaces.



Dimensions Available in 1500, 1800, 2100 and 2800mm widths. (sizes are approximate)

Concrete Finished in smooth white

Wood All woodwork is treated with an exterior grade base coat and two top coats achieving a colour similar to RAL 8008

Fixing Above and below ground fixing

Delivery Each bench is supplied flat packed and delivered on a pallet

Head Office: Neptune Street Furniture, Time House, 19 Hillsons Road, Botley, Hampshire, SO30 2DY

Phone: 01962 777799 - **Fax:** 01962 777723

Email: enquiries@nofl.co.uk - **Website:** www.nofl.co.uk



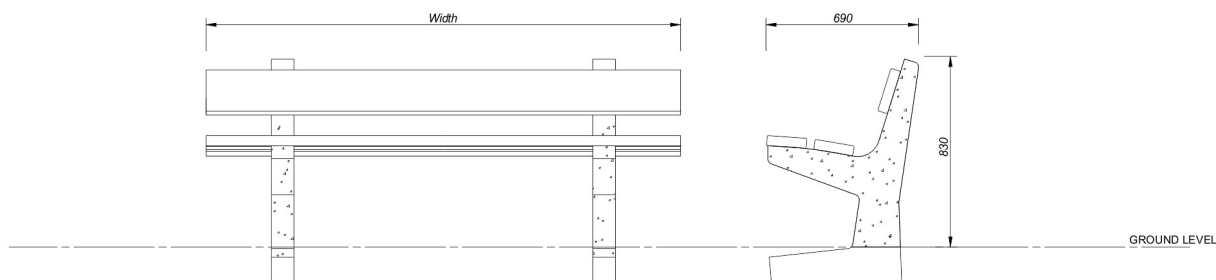
NEPTUNE

CONTEMPORARY AND TRADITIONAL STREET FURNITURE



Adriatic Seat

Our Adriatic range of products is based around white face concrete structures mixed with 45 x 195mm hardwood, both of which offer a clean, durable heavy duty finish. Where required concrete products can be finished in a range of colours or with textured aggregate surfaces.



Dimensions Available in 1500, 1800, 2100 and 2800mm widths. (sizes are approximate)

Concrete Finished in smooth white

Wood All woodwork is treated with an exterior grade base coat and two top coats achieving a colour similar to RAL 8008

Fixing Below ground fixing

Delivery Each seat is supplied flat packed and delivered on a pallet

Head Office: Neptune Street Furniture, Time House, 19 Hillsons Road, Botley, Hampshire, SO30 2DY

Phone: 01962 777799 - **Fax:** 01962 777723

Email: enquiries@nofl.co.uk - **Website:** www.nofl.co.uk



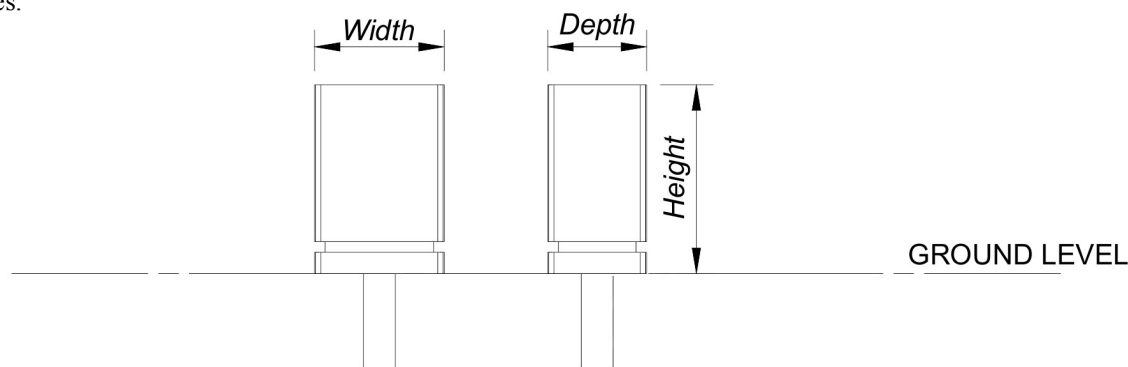
NEPTUNE

CONTEMPORARY AND TRADITIONAL STREET FURNITURE



Adriatic Bin

Our Adriatic range of products is based around white face concrete structures mixed with 45 x 195mm hardwood, both of which offer a clean, durable heavy duty finish. Where required concrete products can be finished in a range of colours or with textured aggregate surfaces.



Dimensions Width - 605mm, depth - 455mm, height - 890mm. (sizes are approximate)
Width - 445mm, depth - 400mm, height - 685mm. (sizes are approximate)

Capacity Large - 100 Litres, includes galvanized liner
Small - 42 Litres, includes galvanized liner

Concrete Finished in smooth white

Fixing Below ground fixing

Delivery Each bin is supplied fully assembled and delivered on a pallet

Head Office: Neptune Street Furniture, Time House, 19 Hillsons Road, Botley, Hampshire, SO30 2DY

Phone: 01962 777799 - **Fax:** 01962 777723

Email: enquiries@nofl.co.uk - **Website:** www.nofl.co.uk



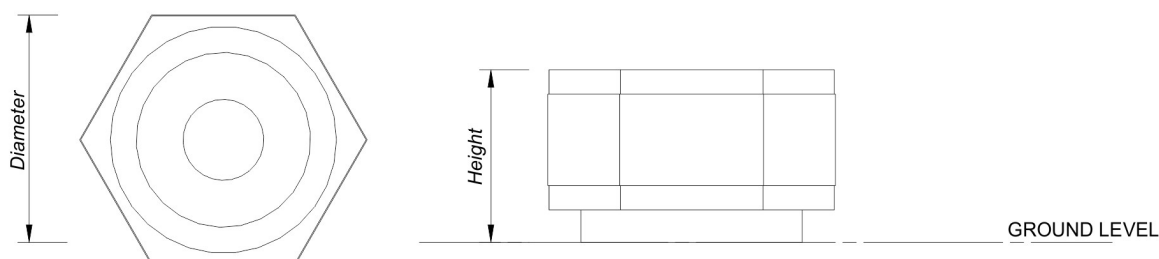
NEPTUNE

CONTEMPORARY AND TRADITIONAL STREET FURNITURE



Adriatic Hexagonal Planter

Our Adriatic range of products is based around white face concrete structures mixed with 45 x 195mm hardwood, both of which offer a clean, durable heavy duty finish. Where required concrete products can be finished in a range of colours or with textured aggregate surfaces.



Dimensions	Small	- 585mm diameter, 318mm high (sizes are approximate)
	Medium	- 765mm diameter, 533mm high (sizes are approximate)
	Tall	- 765mm diameter, 762mm high (sizes are approximate)
	Large	- 1260mm diameter, 508mm high (sizes are approximate)

Concrete Finished in smooth white

Fixing Below ground fixing

Delivery Each planter is delivered on a pallet

Head Office: Neptune Street Furniture, Time House, 19 Hillsons Road, Botley, Hampshire, SO30 2DY

Phone: 01962 777799 - **Fax:** 01962 777723

Email: enquiries@nofl.co.uk - **Website:** www.nofl.co.uk



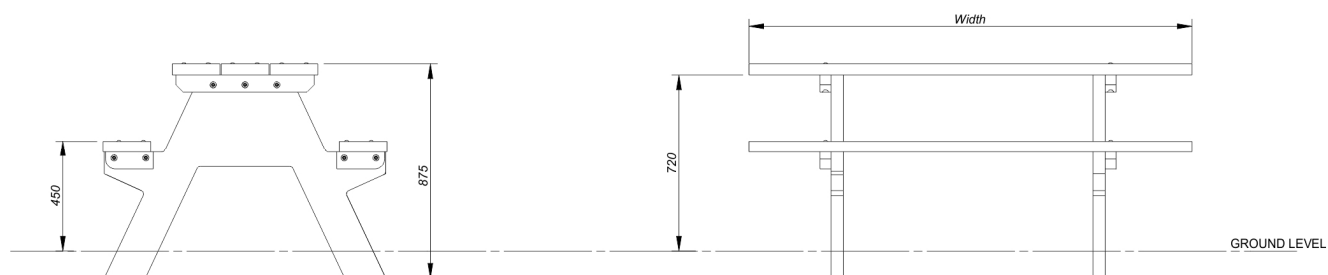
NEPTUNE

CONTEMPORARY AND TRADITIONAL STREET FURNITURE



Adriatic Picnic Table

Our Adriatic range of products is based around white face concrete structures mixed with 45 x 195mm hardwood, both of which offer a clean, durable heavy duty finish. Where required concrete products can be finished in a range of colours or with textured aggregate surfaces.



Dimensions Available in 1500, 1800, 2100 widths. (sizes are approximate)

Concrete Finished in smooth white

Wood All woodwork is treated with an exterior grade base coat and two top coats achieving a colour similar to RAL 8008

Fixing Below ground fixing

Delivery Each picnic table is supplied flat packed and delivered on a pallet

Head Office: Neptune Street Furniture, Time House, 19 Hillsons Road, Botley, Hampshire, SO30 2DY

Phone: 01962 777799 - **Fax:** 01962 777723

Email: enquiries@nofl.co.uk - **Website:** www.nofl.co.uk



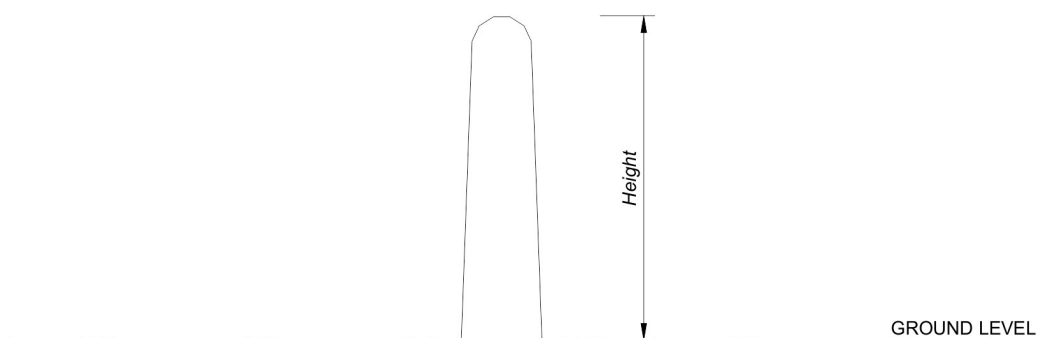
NEPTUNE

CONTEMPORARY AND TRADITIONAL STREET FURNITURE



Adriatic Bollard - Tall

Our Adriatic range of products is based around white face concrete structures mixed with 45 x 195mm hardwood, both of which offer a clean, durable heavy duty finish. Where required concrete products can be finished in a range of colours or with textured aggregate surfaces.



Dimensions Available in 600mm and 900mm above ground height. (sizes are approximate)

Concrete Finished in smooth white

Fixing Below ground fixing

Delivery Bollards are delivered on a pallet

Head Office: Neptune Street Furniture, Time House, 19 Hillsons Road, Botley, Hampshire, SO30 2DY

Phone: 01962 777799 - **Fax:** 01962 777723

Email: enquiries@nofl.co.uk - **Website:** www.nofl.co.uk



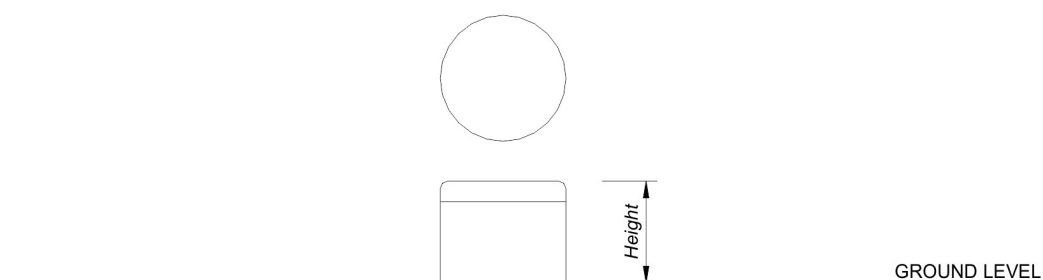
NEPTUNE

CONTEMPORARY AND TRADITIONAL STREET FURNITURE



Adriatic Bollard - Short

Our Adriatic range of products is based around white face concrete structures mixed with 45 x 195mm hardwood, both of which offer a clean, durable heavy duty finish. Where required concrete products can be finished in a range of colours or with textured aggregate surfaces.



Dimensions Available in 400mm diameter, 450mm above ground height. (sizes are approximate)

Concrete Finished in smooth white

Fixing Below ground fixing

Delivery Bollards are delivered on a pallet

Head Office: Neptune Street Furniture, Time House, 19 Hillsons Road, Botley, Hampshire, SO30 2DY

Phone: 01962 777799 - **Fax:** 01962 777723

Email: enquiries@nofl.co.uk - **Website:** www.nofl.co.uk